



X SERIES

Outdoor Full Colour LED Mesh Display

www.jrvisualtec.com





X-Series – Specifications		
Model Number	Unit	X-PH10.4OS
Pixel Pitch	mm	10.4mm horizontal and vertical
LED type	SMD	2727 SMD
Pixel density	dot/m ²	9216
Cabinet Size	mm	1000(W)*500(H)
Cabinet pixel density	dot	4608
Cabinet Pixel matrix	dot	96(W)*48(H)
Cabinet weight	kg/pcs	8.5
Cabinet weight	kg/m ²	17
Cabinet thickness	mm	87
Peak consumption	W/m ²	760
Average consumption	W/m ²	228
Brightness	cd/m ²	5000–7500cd
Gray Scale	bit	16
Color temperature	K	6500–9300K
Brightness adjustment	Not compromise gray scale	0–255 grades
Viewing angle	degree	Horizontal ≥ 140° vertical ≥ 60°
Viewing distance	m	8–300
Frame rate	Hz	60
Control mode		Synchronous or asynchronous
Driving mode		1/4scan constant current
Operation power	AC V	85–250
Life-span		100,000hours
Heat dissipation mode		Electronics passive cooling, whole cabinet air-ventilation
Ingress rating		Front and rear IP67
working temperature storage temperature	℃	–40~+60 celsius degree / – 55~+110 celsius degree
Cabinet material		Aluminium alloy structure
Installation tools		Tool free fast installation
Installation speed		10s / Cabinet
Maintenance method		Front / rear maintenance



Application scenarios:stage,shopping mall, airport,hotel,buildings and other outdoor walls

X Series

Full color and highly transparent led mesh display is a new generation of display.

It can display pictures and videos with vivid colors and details while not affecting the indoor lighting.

Mesh display uses 1000x500mm cabinets that supports horizontal installation and portrait installation so as to more fit your screen size.At the same time,standard cabinet size makes display pictures clear without compression and presents perfect visual effect to people.With the advantage of easy installation method and beautiful appearance,it has become the best choice to glass walls.It can bring creative ideas to you and will lead trends of future.

Product characteristics:



Patented Products



High Brightness



High Transparency



IP 66 Waterproof Rating



High Stability



Front / Rear Service



International Approvals



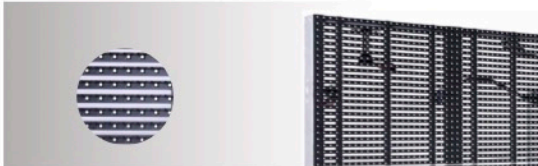
Efficient Heat Dissipation



Light Weight Cabinet



High Definition



✓ High Transparency

Mesh display has higher transparency and better ventilation than traditional displays. These advantages allow for indoor lighting and sight requirements of buildings and glass walls. Especially, it won't affect aesthetic design of buildings facade.



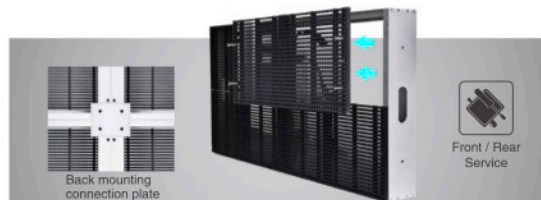
✓ High Brightness

With brightness 5000~7500cd/m², LED mesh display can have clear visual effect under direct sunlight. The brightness can be adjusted automatically according to ambient brightness so as to get the best visual effect with clear display pictures in day-time, bright and colorful in night-time and eye-catching at long viewing distance.



✓ Dual Backup

Led mesh display adopts dual backup design. Whenever there is interruption of data transmitting the backup data will be automatically activated to ensure the normal function of the led display.



✓ Modular Design Front/rear Maintenance

Unique design, it can be assembled and disassembled easily through simple tools and convenient operation. Both cabinets and parts support front or rear service.

Front service : It saves space between mesh display and building
 Rear service : It improves ingress rating and reserved service access to make service quicker and more convenient.



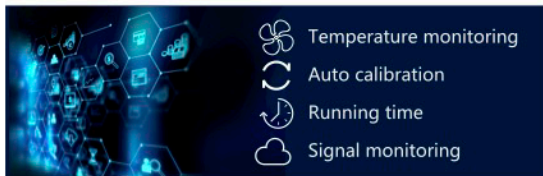
✓ **Light-weight And Slim**

Our cabinet is only 8.5kg, 30% lighter and easier to install compared with same type product in the market. Saving shipping and labor cost and reducing the load on the construction make it more stable.



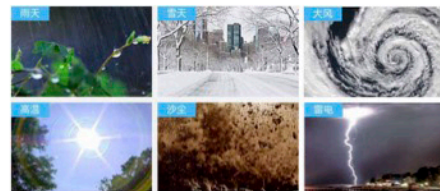
✓ **Colorful Pictures**

Mesh display adopts three basic color (RGB) imaging technology to display red, orange, yellow, white, green, blue, etc, up to 4.4 trillion colors. Its visual effect can match human retina and almost meet all requirements in display area. Color temperature 2500k-10000k adjustable meet the requirements of people or external equipment for all occasions.



✓ **Smart Module**

Smart module can save the calibration data. Modules can auto-load the data after replace a module. System can detect the working status of parts and upload the results to server.



✓ **Working In Harsh Environment**

Waterproof, dampproof, dustproof, lightning protection, anti-electromagnetic interference, anti UV, Extremely high and low temperature or other severe environments, our led mesh display remains good performance.