

Diamond

Fine Pixel Pitch Outdoor LED Display

Applications



Shopping Malls



Showroom



Lobbies



Transportation



Fashion Stores



Car Dealers



Schools



Diamond Series Outdoor LED Display Features



Fine pixel pitch



High brightness



IP65 waterproof



Easy maintenance



Universal module

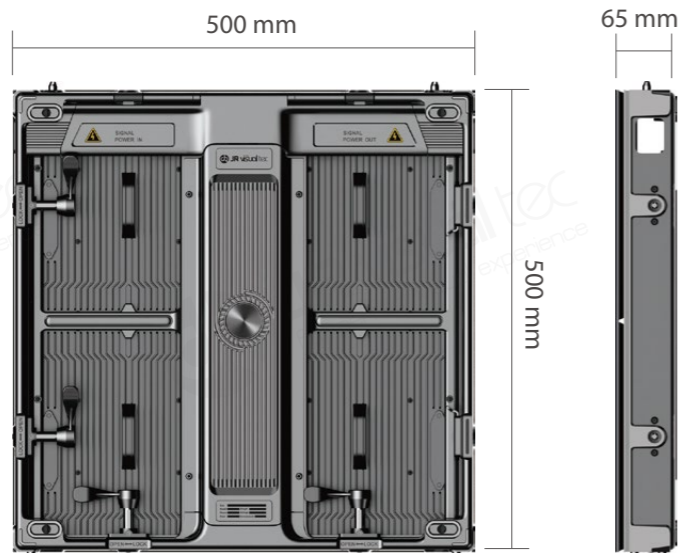
Specification

Model	DM1.9	DM2.9
Pixel Pitch	1.95mm	2.97mm
Pixel Density (pixels/m ²)	262,144	112,896
LED Type	SMD1212 GOB	SMD1515
LED Configuration	1R 1G 1B	1R 1G 1B
Module Material	Die-casting Aluminum	Die-casting Aluminum
Cabinet Material	Die-casting Aluminum	Die-casting Aluminum
Module Connection	Connectors / Cable free	Connectors / Cable free
Module Size (WxHxD)	250x250 mm	250x250 mm
Module Resolution (pixels)	128x128	84x84
Cabinet Size (mm)	500x500x65mm	500x500x65mm
Cabinet Resolution (pixels)	256x256	168x168
Recommend Viewing Distance	>2m	>3m
Contrast Ratio	12,000:1	14,000:1
Brightness (nits)	3,000 - 4,000	4,500 - 5,300
Refresh Rate (HZ)	3,840	3,840
Max. Power Consumption (W/m ²)	560 ±3%	560 ±3%
Avg. Power Consumption (Wm ²)	200-300	200-300
Weight (kg/m ²)	36	34
Special Shape Installation	Flat or Concave	
Color Temperature	8,000 K as standard (3,200-9,000K adjustable)	
Frame Frequency (HZ)	50/60	
AC Input Voltage	110-220V ±10%	
Viewing Angle (°)	160/160 (H/V)	
Operating Temperature (°C)	-30°C ~ +50°C	
Storage Temperature (°C)	-20°C ~ +50°C	
Operating Humidity	10%~95%	
Dead Pixel Rate	<0.0003	
Lift Span	100,000 hours	
Ingress Protection	IP65 front and rear	
Operating Environment	Outdoor use suggested	
Service	Front/Rear access (LED modules. Receiver and power supply)	
Certificate	CE , EMC, LVD, FCC, ROHS, ETL, PSE	

Project Case



Product Dimension



Excellent Product Performance

- 4,000 nits+**
High brightness
- 3,840 HZ+**
High refresh rate
- 14 Bit+**
High gray scale



- IP65**
High waterproof
- 12,000:1**
High contrast ratio
- 160 degree**
Wide viewing angle

Superior Structural Design

Lead DOOH Market Into Fine Pixel Pitch



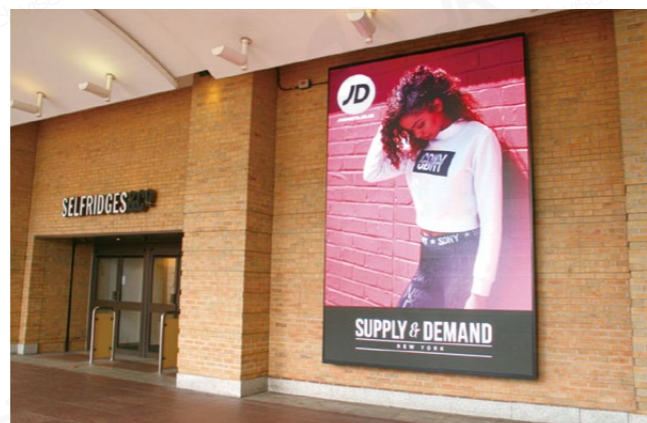
Outdoor LED TV



Bus Station



DOOH



Retail Shops

Die-casting aluminum module and cabinet, for seamless installation and fast heat dissipation.



Both totally front and rear service, easy for maintenance.



Simple design with hidden cables.



Various installation ways: Wall mounting, rigging and stacking.

